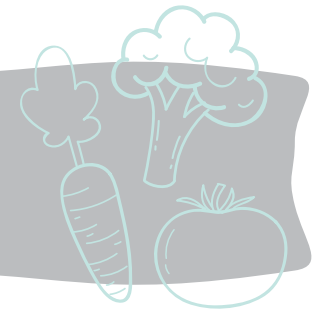


CATERING WITH CARE



March 2021



MONDAY	TUESDAY	WEDNESDAY	THURSDAY	FRIDAY
Chicken Ranch Wrap with Lettuce & Cheese Steamed Corn Diced Pears 1	Beef BBQ Ribs# Mashed Sweet Potatoes Pineapple Tidbits 2	Ham Patty Dinner Roll Au Gratin Potatoes Mandarin Oranges 3	Mostaccioli with Meat Sauce# & Mozzarella Cheese Steamed Mixed Veggies Fresh Fruit Salad 4	Fish Fillet on WGR Bun Peas & Carrots Diced Peaches 5
Turkey Sausage WGR Pizza Steamed Green Beans Fresh Oranges 8	Taco Tuesday! Soft Tacos with Seasoned Meat, Lettuce & Cheese Refried Beans Pineapple Tidbits 9	Beef Hot Dog# on WGR Bun Baked Beans Fresh Cantaloupe 10	Meatballs# & Gravy Dinner Roll Mashed Potatoes Fresh Banana 11	Bean & Cheese Burrito Steamed Corn Diced Pears 12
Cheeseburger# on WGR Bun Baked Crinkle Cut Fries Fruit Cocktail 15	Chicken Alfredo WGR Twists Steamed Broccoli Fresh Gala Apples 16	Turkey Sausage Patties with Egg Mini Bagel Roasted Diced Potatoes Diced Peaches 17	Sweet & Sour Chicken with White Rice Cucumber & Carrot Salad Fresh Cantaloupe 18	Mac & Cheese WGR Sandwich Half Steamed Green Beans Pineapple Tidbits 19
WGR Chicken Patty on WGR Bun Black Bean & Corn Salad Fresh Red Apples 22	Beef Enchilada Casserole# Fresh Baby Carrots Diced Pears 23	Mini Turkey Corn Dogs Fresh Sauteed Zucchini & Squash Pineapple Tidbits 24	Chicken Broccoli Rice Casserole Fresh Garden Salad Mandarin Oranges 25	Baked WGR Fish Sticks with Tartar Sauce Steamed Broccoli Fresh Banana 26
Baked Pancake on a Stick Hash Brown Patties Applesauce 29	Cheese WGR Quesadilla Refried Beans Fresh Oranges 30	Sloppy Joe's on WGR Bun Baked Beans Fresh Cantaloupe 31		

- Menu subject to change
- #Denotes Beef items
- *Denotes Pork items
- WGR denotes Whole Grain

- A WGR item will be served with breakfast or snack, if not served with lunch
- Milk served with each meal: 4oz of whole milk for 1 yr. olds, 4oz of 1% milk for 2 yr. olds, 6oz of 1% milk for 3-5 yr. olds
- Toddler vegetables will be blanched

Catering With Care
612.248.9621 Long Lake
763.783.4330 Coon Rapids